



# RDMC DATA SHEET

**SARG Data Category: 3. CONTRIBUTING**  
*intervening variables that contribute to problems*

**Title: Higher Education Enrollment**

## Higher Education Enrollment

**Indicator:**

Leon County fall enrollment at area institutions of higher learning: Florida State University, Florida A&M University, and Tallahassee Community College (CC).

**Commentary:**

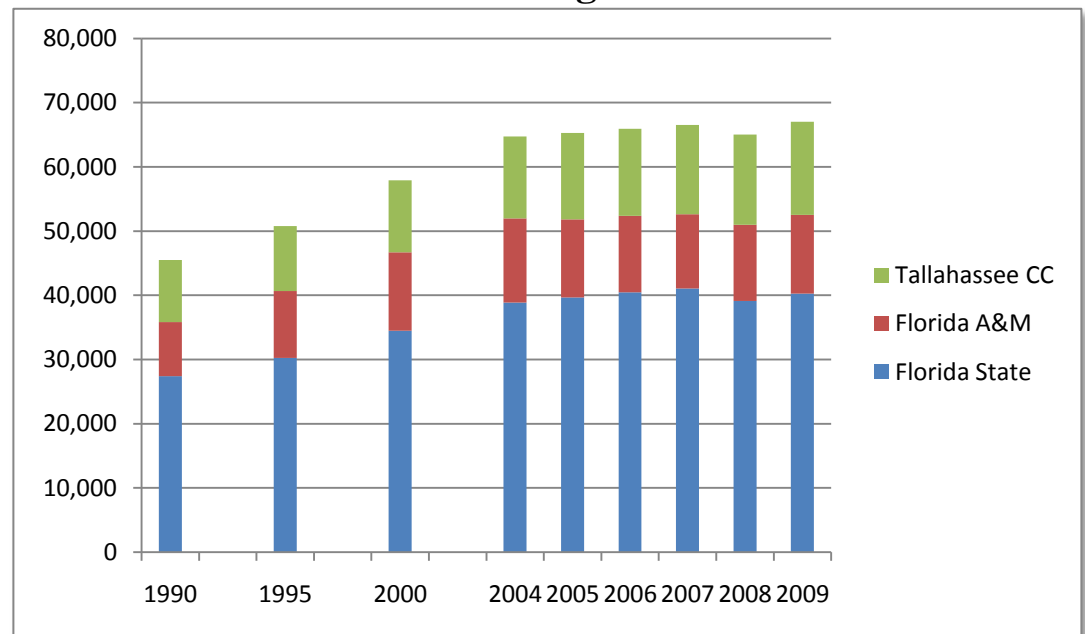
Enrollment at Leon County area institutions of higher learning has increased steadily since 1970 when the total enrollment for all three institutions was 23,788. Enrollment continued a rapid climb, adding over 34,000 students between 1970 and 2000, while total enrollment at the three institutions more than doubled between 1985 and 2009. This large population of over 65,000 college age students in Tallahassee-Leon County may be the primary rationale for campus-area entertainment, alcohol, tobacco and smokeless tobacco outlets. This entertainment and leisure culture can lead to peripheral illegal drug use activities, and can frequently involve underage college and younger school students.

**Source(s):**

Tallahassee-Leon County Statistical Digests, Tallahassee-Leon County Planning Department (TLCPD), 2005-10.  
[www.talgov.com/planning/support/stat\\_digest.cfm](http://www.talgov.com/planning/support/stat_digest.cfm)

*Note: TLCPD Statistical Digest notes source as Florida Department of Education Student Database Reports.*

**Chart 1: Higher Education Enrollment**



**Table 1: Higher Education Enrollment**

	1990	1995	2000	2004	2005	2006	2007	2008	2009
Florida State	27,427	30,268	34,500	38,886	39,652	40,474	41,065	39,136	40,255
Florida A&M	8,411	10,395	12,202	13,070	12,177	11,913	11,567	11,848	12,261
Tallahassee CC	9,679	10,101	11,207	12,784	13,439	13,526	13,891	14,024	14,497
<b>total</b>	<b>45,517</b>	<b>50,764</b>	<b>57,909</b>	<b>64,740</b>	<b>65,268</b>	<b>65,913</b>	<b>66,523</b>	<b>65,008</b>	<b>67,013</b>