



# RDMC DATA SHEET

**SARG Data Category: 3. CONTRIBUTING**  
*intervening variables that contribute to problems*

**Title: Youth Population / School Enrollment**

## Youth Population / School Enrollment

**Indicator:**

Leon County youth population ages 5 to 17 by race and ethnicity in the following categories: Non-Hispanic (NH) White, Non-Hispanic Black, Hispanic Origin, and Other races and ethnicities; and public school enrollment grades K-12 in comparison to youth population ages 5 to 17.

**Commentary:**

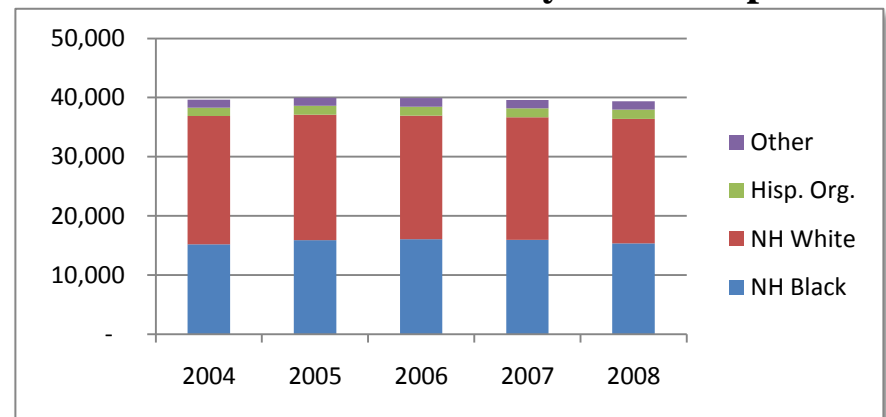
The total population of Leon County youth ages 5 to 17 has remained fairly stable near 40,000 since 2004. The demographic makeup of the youth population has also been relatively steady with slightly over 50% white, about 40% black and less than 10% Hispanic or other. Meanwhile, Leon County public school enrollment has shown slight increases. The data shows that about one in five Leon County youth are not reached by public school programs. These young people may be in private schools or home-schooled. For these students and their families, alternative intervention strategies may be needed. Also, with nearly half of the youth identifying themselves as black, Hispanic or other minorities, culturally sensitive and appropriate social marketing and communication mechanisms should be developed and utilized.

**Source(s):**

Tallahassee-Leon County Statistical Digests, Tallahassee-Leon County Planning Department (TLCPD), 2005-09, and supporting resources.  
[www.tal.gov.com/planning/support/stat\\_digest.cfm](http://www.tal.gov.com/planning/support/stat_digest.cfm)

*Note: TLCPD Statistical Digest demographic data for young adults is in the 18 to 34 year old age group.*

**Chart 1: Leon County Youth Population**



**Chart 2: Public School Enrollment / Population**

