



RDMC DATA SHEET

SARG Data Category: 3. CONTRIBUTING
intervening variables that contribute to problems

Title: Poverty, Children and Youth

Poverty, Children and Youth

Indicator:

The percentage of children and youth under 18 years of age who are considered below the poverty level over previous 12 months. Leon County and Florida census data and survey estimates.

Commentary:

The percent or incidence of children age 0-17 living in poverty in the State of Florida has remained fairly constant since 1990. In Leon County, children and youth under age 18 living in poverty has risen steadily since the 1990 and 2000 Census, and is estimated to have reached a peak of 20% in 2006 according to the American Community Survey (ACS) 2006. The ACS furthermore indicated a significant drop to 12.8% in 2007 but then a rise back up to 17.3% in 2008. New data is expected following completion of the 2010 Census.

Source(s):

US Census Bureau, US Census 2000 and US Census American Community Surveys (ACS), 2005-08; <http://www.census.gov/>; and 21st Century Council 2006 Quality of Life Report.

Note: United States Census is taken every 10 years to collect information about the people and housing of the United States. The US Census Bureau's American Community Survey (ACS) estimations are typically taken every year with smaller samples.

Chart 1: % Under 18 Years Below Poverty Level

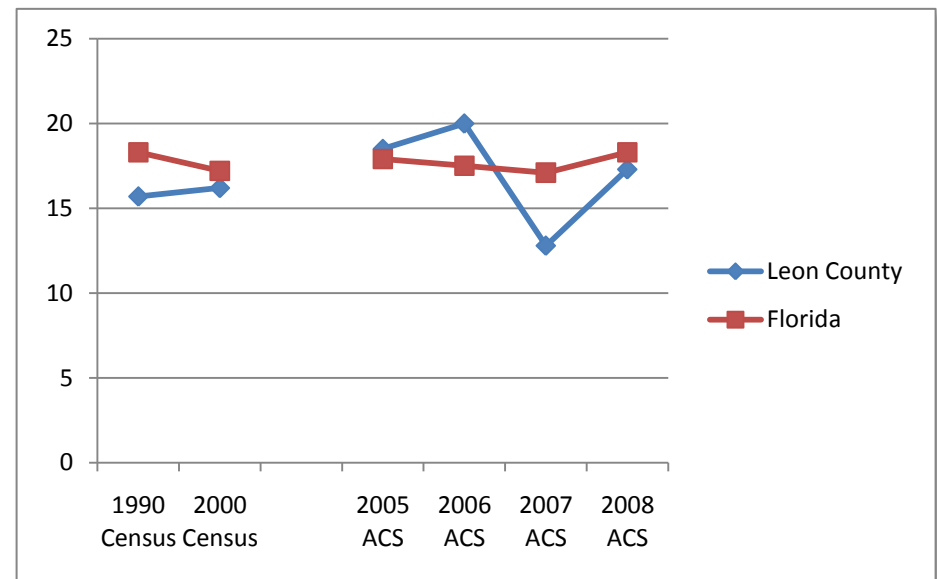


Table 1: % Under 18 Years Below Poverty Level

	1990 Census	2000 Census	2005 ACS	2006 ACS	2007 ACS	2008 ACS
Leon County	15.7	16.2	18.5	20.0	12.8	17.3
Florida	18.3	17.2	17.9	17.5	17.1	18.3