



RDMC DATA SHEET

SARG Data Category: 2. CONSUMPTION
behavior that is related to the problem

Title: Youth Tobacco Use

Youth Tobacco Use

Indicator:

The percentage of Leon County (LC) middle and high school youth reporting use of tobacco – cigarettes and chewing tobacco – at least once in their lifetimes or within past 30 days; and Florida statewide averages for past 30 day use.

Commentary:

According to Florida Youth Substance Abuse Surveys (FYSAS), Leon County youth have been consistently reducing their use of tobacco over the period 2000 to 2008. Overall both middle and high school youth have significantly reduced the reported use of tobacco sometime in their lifetimes, with middle school students dropping from 31.2% to 18.7%, and a corresponding reduction among high school youth from 56.5% to 33.1%. Similarly, past 30 day reported use is lower in both age groups, dropping from 13.1% to 5.2% among middle school youth and from 26.2% to 11.7% for high school students. The overall trend is consistent even with what appears to be an anomaly in 2002: in that year the Leon County sample size of 375 was considerably smaller than the typical range of 1000-1400 in other years. Additionally, the past 30 day use for both middle and high school Leon County youth overall from 2000-08 has been nearly identical to statewide averages.

Source(s):

Florida Youth Substance Abuse Surveys (FYSAS), even years from 2000 to 2008, Leon County Reports.

<http://www.dcf.state.fl.us/mentalhealth/publications/fysas/>

Chart 1: Middle School Tobacco Use

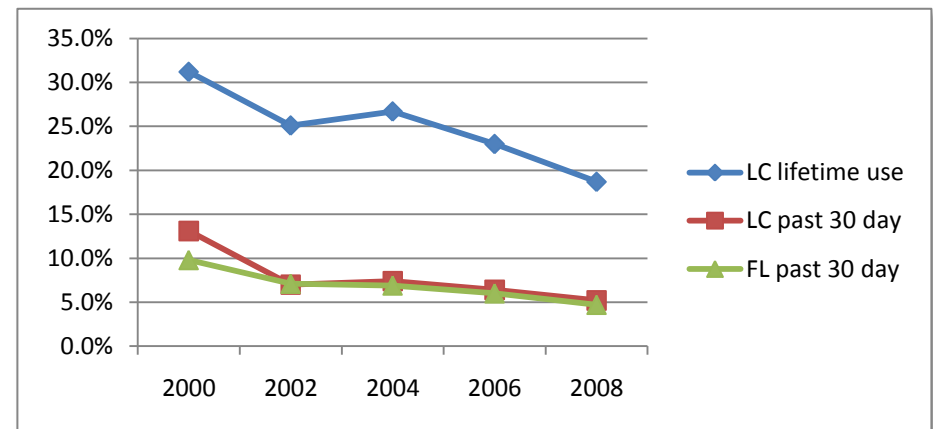


Chart 2: High School Tobacco Use

