



RDMC DATA SHEET

SARG Data Category: 1. CONSEQUENCES
evidence of the problem

Title: Youth Sexually-Transmitted Diseases

Youth Sexually-Transmitted Diseases

Indicator:

The reported number of Sexually-Transmitted Disease (STD) cases for all races all sexes per 100,000 youth ages 15-19 and 15-24, Leon County and Florida statewide.

Commentary:

The reported number of STD cases per 100,000 youth ages 15-24 has been consistently and at times significantly above the state average since 2001. Reported cases statewide held more or less constant from 1999 to 2005 but have on the rise 2005-08. Leon County reached a high number of reported cases in 2002-03, and has increased markedly since 2007. The FloridaCHARTS *School-aged Child and Adolescent Profile* reported STD cases ages 15-19 (3-Year Rates) for 2005-07 and 2006-08 with Leon County Quartile ratings of 4, or least favorable, in both 3-year periods. The increase from 2007 to 2008 is alarming if it continues as a trend.

Source(s):

FloridaCHARTS Reports and FloridaCHARTS *School-aged Child and Adolescent Profile*, <http://www.floridacharts.com/charts/>

Note: Florida Community Health Assessment Resource Tool Set (CHARTS) Reports available for the decade 1999-2008. School-aged Child and Adolescent Profile (with 3-year average rates) is available for Leon County for years 2007 and 2008.

Chart 1: Reported STD Cases, Ages 15-19 and 15-24

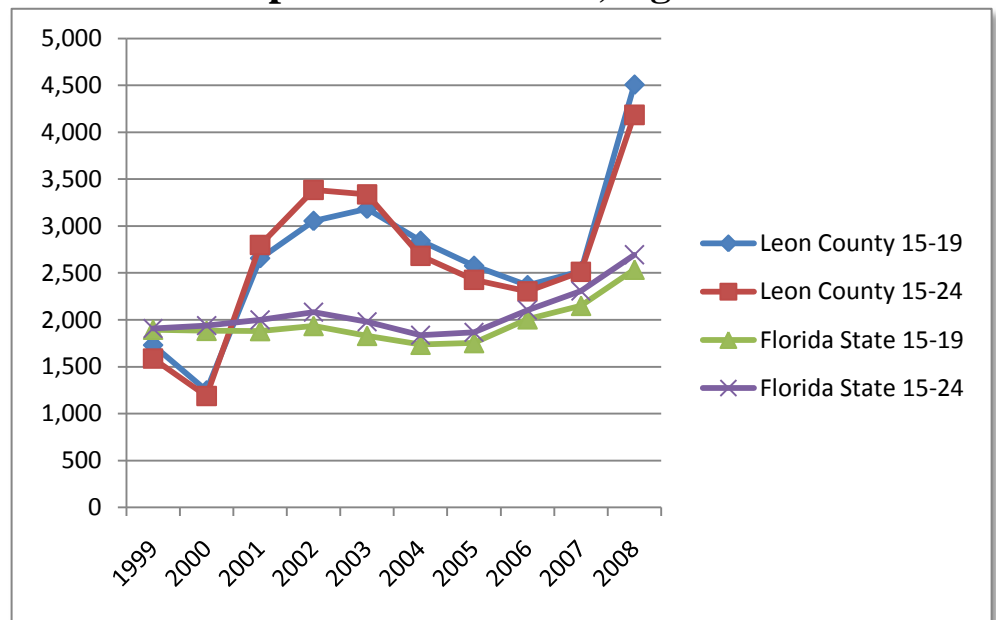


Table 1: Reported STD Cases, Ages 15-19 and 15-24

	1999	2000	2001	2002	2003	2004	2005	2006	2007	2008
Leon County 15-19	1,731	1,247	2,656	3,054	3,183	2,842	2,575	2,369	2,518	4,506
Leon County 15-24	1,586	1,189	2,799	3,385	3,337	2,682	2,425	2,303	2,513	4,185
Florida State 15-19	1,896	1,884	1,882	1,936	1,830	1,736	1,754	2,007	2,150	2,535
Florida State 15-24	1,909	1,940	2,000	2,082	1,980	1,837	1,867	2,104	2,307	2,694