



# RDMC DATA SHEET

SARG Data Category: 1. CONSEQUENCES  
evidence of the problem

Title: School Crime and Violence

## School Crime and Violence

### Indicator:

The total number of incidents occurring on school grounds, on school transportation, or at school-sponsored events and reported by the school district as incidents for purposes of data collection.

### Commentary:

The total number of reported incidents of possession of alcohol (A), tobacco (T) and other drugs (D) at all Florida schools have declined markedly since 1998. Leon County data indicates a similar but more variable trend. Total number of all reported incidents of crime and violence in all Florida schools has also dropped significantly since 1998 while Leon County reports of all crime and violence incidents has been rather constant averaging 5.5% since 1998. Anomalies may be due to changing parameters and definitions of crime and violence, variable reporting methodologies in different districts, or a reluctance to address substance abuse within the school's disciplinary system.

### Source(s):

FL Department of Education (DOE) , Florida School Indicators Reports (FSIRs), <http://www.fldoe.org/eias/eiaspubs/fsir.asp>

*Note: Florida School Indicators Reports (FSIRs) for school, district and state data are published by Florida DOE each year. Archive data parameters vary from more recent data. Analysis of data constructs and regular fact checking is recommended.*

Chart 1: Incidence of A, T & D as % of Total Membership

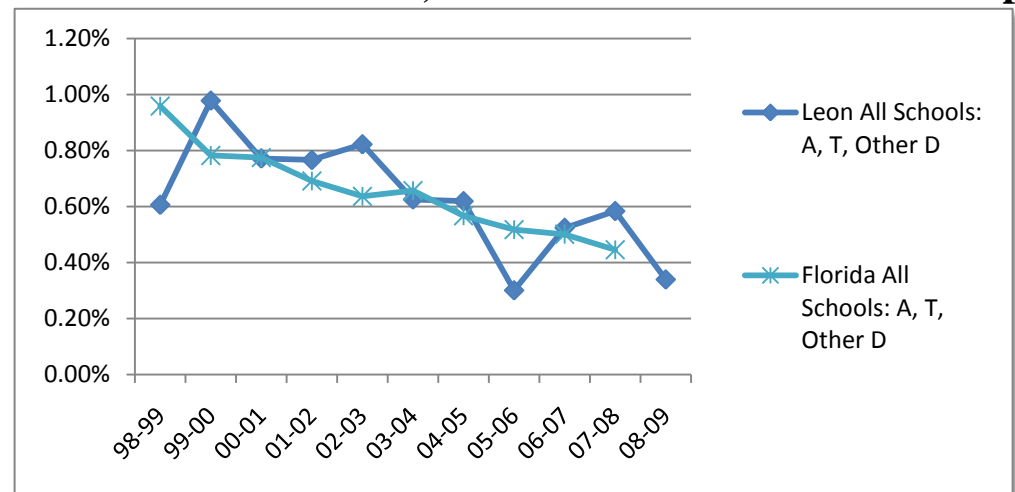


Table 1: All Incidents as % of Total Membership

	98-99	99-00	00-01	01-02	02-03	03-04	04-05	05-06	06-07	07-08	08-09
Leon All Schools: A, T, Other D	0.61	0.98	0.77	0.77	0.82	0.62	0.62	0.30	0.52	0.58	0.34
Leon All Schools: All Incidents	5.78	6.11	5.28	5.53	5.48	5.90	6.88	6.23	4.95	4.68	3.74
FL All Schools: A, T, Other D	0.96	0.78	0.77	0.69	0.64	0.66	0.57	0.52	0.50	0.45	-
FL All Schools: All Incidents	9.97	7.50	5.94	5.18	4.87	5.28	4.33	3.89	3.63	2.77	2.71