



# RDMC DATA SHEET

**SARG Data Category: 1. CONSEQUENCES**  
*evidence of the problem*

**Title: School ACT and SAT Test Scores**

## School ACT and SAT Test Scores

### Indicator:

The composite mean score for students tested on the ACT, an aptitude test; and the mean score for students tested on the SAT, a national aptitude test; both widely used for college placement and admission purposes. Beginning in 2006-07 the SAT score includes reading, math and writing results due to the addition of a writing subtest.

### Commentary:

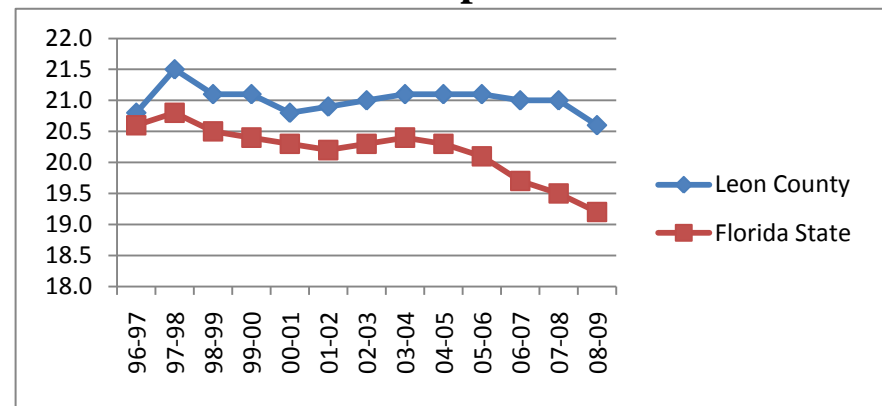
The Leon County School District has consistently had higher ACT and SAT test scores since 1996 compared to statewide averages. While state average ACT results have been in a more or less steady decline since 1997, Leon County has had more even results with the exception of 2008-09. SAT mean test scores changed abruptly in 2006 due to changes in SAT scoring, as noted in "Indicator.". Thereafter, between 2006-07 and 2008-09 Leon County's SAT scores showed measurable improvement increasing by 29 points while statewide averages remained fairly constant, increasing only 2 points.

### Source(s):

Florida Department of Education (DOE) , Florida School Indicators Reports (FSIRs), <http://www.fldoe.org/eias/eiaspubs/fsir.asp>

**Note:** Florida School Indicators Reports (FSIRs) for school, district and state data are published by Florida DOE each year. Archive data varies somewhat from more recent data, requiring re-organization and collation interventions. Regular fact checking is recommended.

**Chart 1: ACT Composite Mean Test Scores**



**Chart 2: SAT Mean Test Scores**

